



Pallet & Wood Product Heat Treatment System

PEST-HEAT specializes in a Heat Treatment System for non-manufactured wood products. The Treatment System utilizes heat within a confined area to create an environment proven effective to meet international shipping regulations. Heat is circulated throughout the system to raise the core temperature of pallets, boxes, crates, or dunnage to eradicate a possible pest infestation.

Benefits and Features:

- The EC-300 Pallet Capacity System
- Forklift Loading at Ground or Dock Level
- State of the Art Temperature Monitoring Equipment
- On-Site Training and Set-up in 1-2 days
- High CFM output to Reduce Treatment Times
- Even Flow Circulation - Best In Industry
- High Efficiency Heating System = LOW COST!

PEST-HEAT offers the Support and Equipment necessary for successful thermal pest eradications. PEST-HEAT views service as a first priority; we offer a comprehensive training program on the equipment and temperature monitoring equipment. No other company boasts the customer loyalty that Pest-Heat has and we pride ourselves on this accomplishment. The PEST-HEAT product line has earned an outstanding reputation for durability and reliability. Service calls are cut to a minimum with our equipment. All of the PEST-HEAT units are equipped with the most complete safety system available in the industry today.

PEST-HEAT Pioneered Thermal Pest Management through the use of Controlled Heat. Pest Heat developed the Thermal Pest Management System and the Thermal Pest Eradication System through years of extensive testing and data collection working in partnership with the Defense Logistics Agency (DLA) and the United States Army Center for Health Promotion and Preventive Medicine (CHPPM). Patent # 6,678,994.

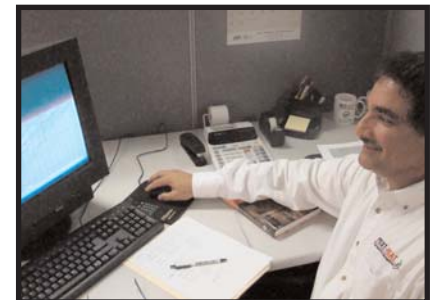
Load. Treat. Stamp.



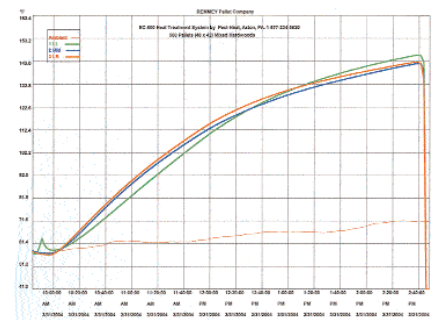
EC-300 Chamber



Forklift Loading



Temperature Monitoring



Printable Graphs for Record Keeping

Equipment Specifications

Model Number	EC-300
Construction	White Aluminum Exterior Panels
Floor	Extruded aluminum (no skid) floor with 3" foam insulation
Interior Lining	Plywood on front, ceiling, and sidewalls. 2' foam in front and ceiling, 1 1/4' in sidewalls.
Rear Door	Full open swing doors with 1 1/2' foam insulation
Heating System	PH-2000 DEMO Unit, modulating from 50,000 but/hr up to 2,000,000
Fuel	Natural Gas or Vapor Propane
Electrical Requirements	230 Volt, 1 Phase
Dimensions	Interior = 97-1/2" W x 30' L Exterior= 119- 1/4" H x 101 1/2" W x 30'5-1/4"L Door Opening= 106-5/8"
Chamber Capacity	308 Pallets 48" x 42"
Weight	7,143 lbs

